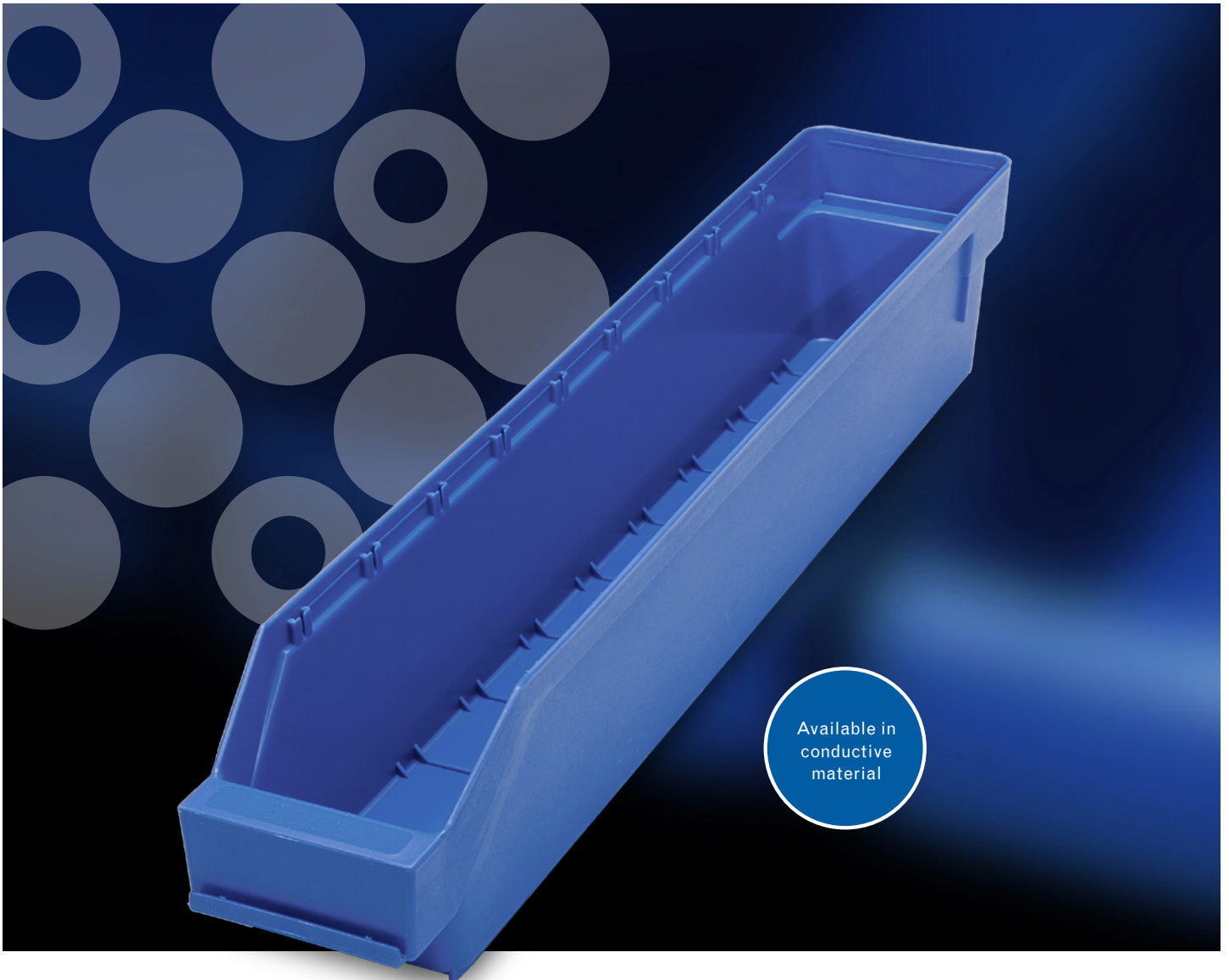


# Component bin **TYPE 5009**



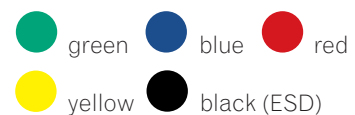
Available in  
conductive  
material

## COMPONENT BIN

Type	5009
Art. no	500301 (green)
	510301 (blue)
	520301 (red)
	540301 (yellow)
	550301 (black ESD)
Dimensions mm	500x90x95
Interior dimensions	445x70x88
Dividers/bin	9
No/carton	40
Kg/m <sup>3</sup> per carton	11,2/0,10
No/pallet	800
Material	PP
Temperature constant	-20° to +80°C

- Compact design
- Cost-effective
- Ergonomic
- High Impact Polypropylene
- 16 sizes

All models in 5 different colours:



 **STEMO**

**STEMO AB** | Box 95 | SE-565 22 Mullsjö, Sweden  
Tel: +46(0)392 495 00 | [info@stemo.se](mailto:info@stemo.se) | [www.stemo.se](http://www.stemo.se)